

POSEIDON

POOL PLASTER





FIJI BLUE MARBELITE

THE BASICS

Pool Calculation

To achieve the best finish, it is essential to order the correct number of bags based on the total square meterage of your pool. Using too few bags can lead to common issues such as overwatering, over-troweling and visible colour inconsistencies.

POOL SIZE	TOTAL m ²	BAGS REQUIRED	MOSAICS	VOLUME
4 X 3	33	17	32 Sheets	18'000 L
5 X 3	39	20	35 Sheets	22'500 L
6 X 3	45	23	38 Sheets	27'000 L
6 X 4	54	27	42 Sheets	36'000 L
7 X 4	61	31	45 Sheets	42'000 L
8 X 4	68	34	48 Sheets	48'000 L
9 X 5	87	44	55 Sheets	67'500 L
10 X 5	95	48	58 Sheets	75'000 L
12 X 6	126	63	68 Sheets	108'000 L

PACKAGING

540 X 910mm 200 micron 40kg Bag

COVERAGE:

2m² per 40 Kg Bag

APPLICATION THICKNESS:

6-8mm

SETTING TIME:

Initial set within 45min (weather dependent). Final set within 6-8hrs (weather dependent)

CURING PERIOD:

Execute a light mist over the entire pool once plastering is done to prevent premature curing which may lead to hairline cracks on the marbelite surface.

Allow a 24-hour drying time before filling the pool.

MARBELITE



◆ PHANTOM BLUE MARBELITE

MARBELITE

Colour range



AQUA BLUE MARBELITE



CASABLANCA MARBELITE



SILVER GREY MARBELITE



TURKISH BLUE MARBELITE



TOPAZ MARBELITE



LAVENDER BLUE MARBELITE



MALTA BLUE MARBELITE



SKY BLUE MARBELITE



BLUE DIAMOND MARBELITE



TURKISH TURQUOISE MARBELITE



MIDNIGHT BLUE MARBELITE



DAVEY JONES MARBELITE

MARBELITE

Colour range



STEEL GREY MARBELITE



SALT ROCK MARBELITE



AMAZONWHITE MARBELITE



PITCH BLACK MARBELITE



DOLPHIN GREY MARBELITE



MAGNA BLUE MARBELITE



CHARCOAL MARBELITE



CHARCOAL OLIVE MARBELITE



FIJI BLUE MARBELITE



POWDER BLUE MARBELITE



QUICKSILVER MARBELITE



OLYMPIC BLUE MARBELITE



MARBELITE

Colour range



WHITE MARBELITE



MOZAMBIQUE MARBELITE



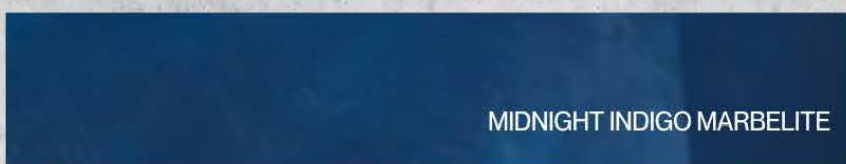
DEEP BLUE MARBELITE



EMERALD GREEN MARBELITE



OCEANA MARBELITE



MIDNIGHT INDIGO MARBELITE



ARCTIC BLUE MARBELITE



SAPPHIRE BLUE MARBELITE



AIR FORCE BLUE MARBELITE



STEEL BLUE MARBELITE



CARIBBEAN GREEN MARBELITE



POSEIDON MARBELITE

SKY BLUE

Marbelite



TURQUOISE

Marbelite



CARIBBEAN GREEN



TURKISH TURQUOISE



AMAZONWHITE



POSEIDON MARBELITE



AMAZONITE

DARK BLUE

Marbelite



CAPRI



MIDNIGHT INDIGO



LAVENDER BLUE



CASABLANCA



DAVEY JONES

BRIGHT BLUE

Marbelite



GREY & BLACK

Marbelite



DOLPHIN GREY



SILVER GREY



CHARCOAL OLIVE



BLACK



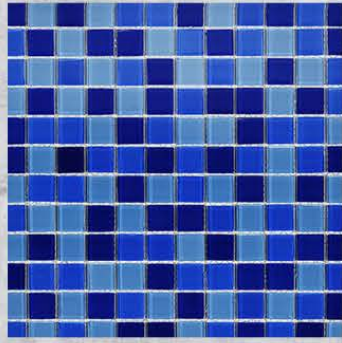
CHARCOAL



EMERALD GREEN MARBELITE

POOL MOSAICS

Glass/ Porcelain

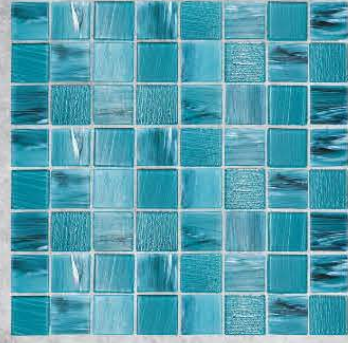


FROZEN BLUE-GLOW

Sheet Size – 300x300mm

22 Sheets per box

CODE: FT2277G

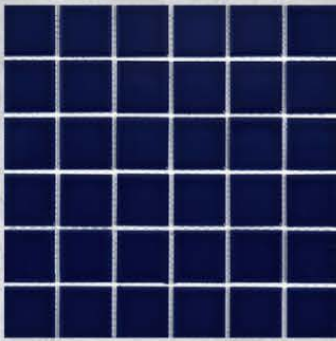


MEDITERRANEAN SEA

Sheet Size – 300 x 300 mm

22 Sheets per box

CODE: SA5



COBALT BLUE

Sheet Size – 300X300mm

22 Sheets per box

CODE: FT5356N



GLASS MOSAIC CAPRI

Sheet Size – 300X300mm

22 Sheets per box

CODE: FX202

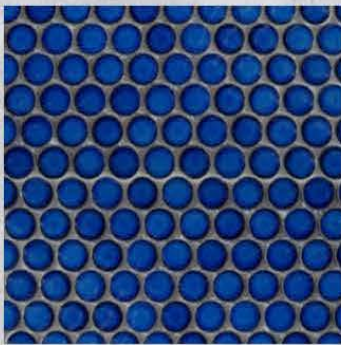


CARIBBEAN SEA

Sheet Size:- 312x330x6mm

22 Sheets per box

CODE: SA4



BUBBLE HAWAII

Sheet Size:- 312x330x6mm

20 Sheets per box

CODE: RD08258



BAZZARUTO BLUE FINGER

Sheet Size:- 296x300x6mm

20 Sheets per box

CODE: RG08240



HAWAII BLUE FINGER

Sheet Size:- 296x300x6mm

20 Sheets per box

CODE: RG08258

POOL MOSAICS

Glass/Porcelain

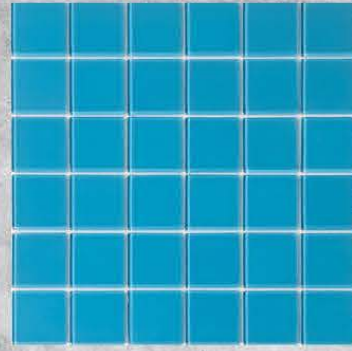


GLASS MOSAIC PHTHALO

Sheet Size – 300x300mm

22 Sheets per box

CODE: FX203



AQUAMARINE

Sheet Size – 300x300mm

22 Sheets per box

CODE: FTM2531-50



GLASS DENIM

Sheet Size – 300X300mm

22 Sheets per box

CODE: FX201

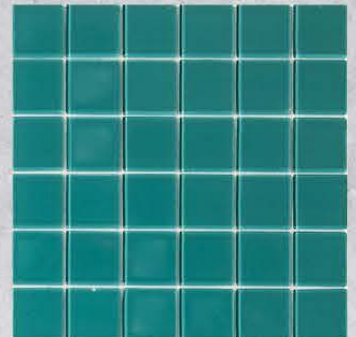


METALLIC GREY

Sheet Size – 300X300mm

22 Sheets per box

CODE: FTM2556-50



SEA GREEN

Sheet Size:- 300x300mm

22 Sheets per box

CODE: FTM2520-50

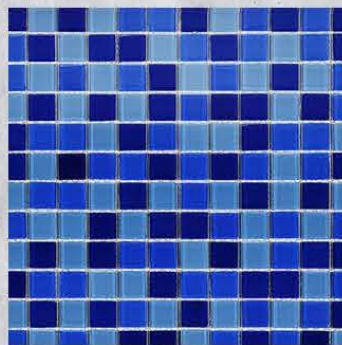


EGYPTIAN BLUE

Sheet Size:- 300x300mm

22 Sheets per box

CODE: FX204

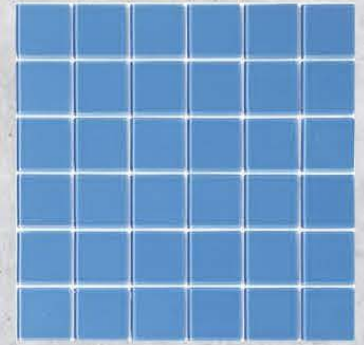


OCEAN BLUE MIX

Sheet Size:- 300x300mm

22 Sheets per box

CODE: ZBMT06



SKY BLUE

Sheet Size:- 300x300mm

22 Sheets per box

CODE: FTM2532-50

Water Testing



MTD SHEET

Testing your source water before filling is essential to maintain the fresh aesthetic and longevity of your new marbelite surface. Poor water balance can lead to staining, scaling or surface damage.

We recommend a full analysis of source water, including PH, Alkalinity, Chlorine, Calcium Hardness, Phosphates, Cyanuric Acid, Metals & Copper.

Water test reports can be sent to Poseidon Pool Plaster via email or Whatsapp- Our team will guide you through start-up maintenance and proper water balancing

Causes	Result	Ideal Range
Low PH	Etched & Stained Marbelite	7.4-7.6
High PH	Scaling & Cloudy Water	7.4-7.6
Low Calcium	Etching & Surface Degradation, Shortened Lifespan, White Patches in Pool	200-400 ppm
High Calcium	Scaling (White, chalky deposits on the pool surface)	200-400 ppm
Low Alkalinity	PH instability that causes PH fluctuations, Etching and surface damage as a result of aggressive water that will lead to rough spots and discoloration	80-120 ppm
High Alkalinity	PH Lock and resistance to adjustment, Scale Formation, Reduced chemical efficiency	80-120 ppm
Low Cyanuric Acid	Chlorine absorbs much quicker which will lead to more frequent chlorine administration	30-50 ppm
Metals And Copper	Staining (green, blue, brown), Water discoloration, Surface damage	0

CAUSE &

Effect

Understanding Damage in Marbelite Pools

Marbelite is a durable and visually stunning pool finish, but like all cement-based surfaces, it is highly sensitive to water chemistry. These images show what can happen when a pool isn't properly balanced. Proper water testing and start-up procedures are essential to prevent early surface failure.



Pool Floater Damage

Chlorine Floaters release sanitizer with a very low PH-typically around 2. If left stationary, especially near steps or shallow areas, they can cause bleaching of the marbelite. This often looks like the marbelite surface has faded, but in reality, the surface has been chemically burned.



Surface Etching

White blotches, chalky residue and rough texture on pool plaster are typically caused by aggressive water chemistry, especially low PH and Calcium levels. This leads to surface etching and pigment loss.



Over Troweling

Grey or darkened blotchy or streaky discoloration of pool plaster (cement flatwork) is known to be caused by several improper plastering practices, including the addition of calcium chloride to the mix, that results in late hard or dry troweling.

1. Product Quality and Warranty:

- 1.1. The Company agrees that all plaster mixes supplied meet the industry standards for pool construction and repair at the time of sale.
- 1.2. The Company provides a limited warranty on the quality and durability of its products for a period of 6 months from the date of purchase, provided that the products are used and applied in accordance with the Company's guidelines.
- 1.3. The warranty is void if the products are improperly applied, exposed to abnormal environmental conditions, or used in conjunction with non-approved materials or methods.
- 1.4. The Company is not liable for colour variation, shading, or spotting that may occur due to improper water balance, application, or curing processes beyond the Company's control.

2. Limitation of Liability.

- 2.1. The Company's liability for any defect or non-performance of the plaster mixes is limited solely to the replacement of defective products, or, at the Company's discretion, a refund of the purchase price.
- 2.2. The Company is not responsible for any incidental, indirect, or consequential damages arising from the use of its products, including but not limited to the costs of pool repairs, loss of use, or damage to third-party property.
- 2.3. The Company will not be held responsible for damages or defects caused by external factors such as poor workmanship, improper pool design or construction, inadequate water chemistry, weather conditions, or general wear and tear.

3. Application Guidelines.

- 3.1. The customer acknowledges that the successful application and curing of the plaster mix are dependent on following the Company's provided instructions and industry best practices.
- 3.2. The Company recommends that the plaster mix be applied only by qualified and experienced professionals. The Company will not be liable for any damages or defects arising from improper application or misuse of its products.

4. Customer Responsibilities.

- 4.1. The customer is responsible for ensuring that all pool surfaces are adequately prepared, clean, and free of debris before application.



Contact

Phone: 060-849-3924

Website: www.poseidonpoolplaster.co.za

Email: sales@poseidonpoolplaster.co.za

Address: 290 Foal Road, Knoppieslaagte,
Centurion, Gauteng, 0035



Banking Details

Account Name: GT-PACK CC

Account Type: Cheque Account

Account Number: 62 909 366 280

Branch Code: 250655

Swift Code: FIRNZAJJ

Quote number to be used as payment reference



Poseidon Pool Plaster

A division of Viking group Africa